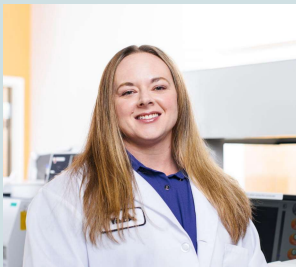


# Graduate Women of Engineering : 2022 Speaker Series

Featuring engineers from a variety of career paths, this series aims to provide a unique forum for engineers to share their career story, including how and why they have made their personal and professional decisions and balanced their careers with other aspects of their lives. **Event is held at 6pm PST in Sutardja Dai Hall, room 630, and dinner will be provided.**



**Dr. Sherri Messersmith, Mathematics**  
**February 17th**  
Math Professor and Textbook Author



**Dr. Kristy Hawkins, Chemical Engineering**  
**February 24th**  
Co-founder and CSO at Antheia



**Dr. Chaeyoung Shin, Chemical Engineering**  
**March 3rd**  
Co-founder and CEO at NAMUH



**Dr. Vi Rapp, Mechanical Engineering**  
**March 17th**  
Position

*This series is sponsored by:*



The Graduate Assembly

[Zoom link](#)

RSVP and GCal link : see individual speaker's flyer

[More information:](https://gwe.berkeley.edu/speaker-series/) <https://gwe.berkeley.edu/speaker-series/>